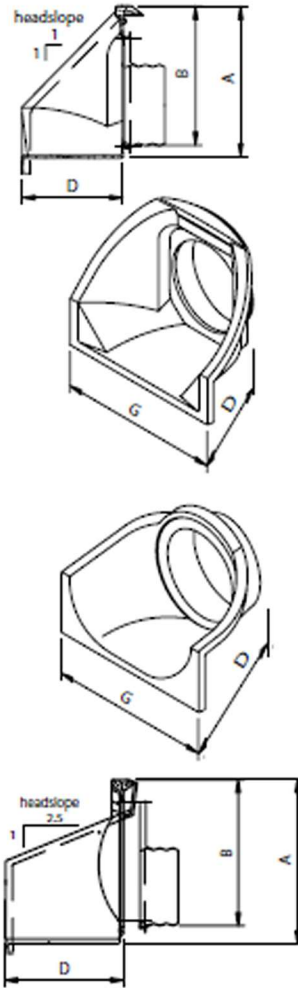


PRO-ECO-LITE™ DESIGN INFORMATION

PRO-ECO-LITE™ HEADWALLS



Standard Headwall 45 Degree Head Slope

Series	Max. Pipe Dia. (mm)	A (mm)	B (mm)	D (mm)	G (mm)	Max Gate Dia. (mm)	Headwall Weight (kg)
1.5	300	444	394	330	725		18
2	375	600	508	355	1090	305	27
3	600	920	650	650	1340	457	61
4	900	1300	915	915	1905	762	105
5	1200	1600	1550	1170	2360	914	277

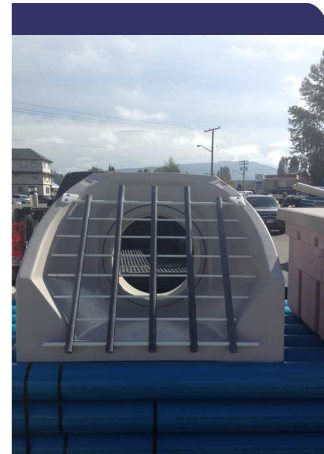


Aprons are available for high erosion wash-out conditions

Low Profile Headwall 22.5 Degree Head Slope

Series	Max. Pipe Dia. (mm)	A (mm)	B* (mm)	D (mm)	G (mm)	Max Gate Dia. (mm)	Headwall Weight (kg)
2	375	600	585	450	895	305	27
3	600	910	825	675	1345	457	60
4	900	1275	1180	975	1905	762	108
5	1200	1615	1430	1200	2380	914	276
6	1600	2140	1890	1615	3150	1067	450
7	2400	2620	2320	1952	3850	1219	862

*Invert dimensions "B" for flap and sluice gate models may vary.



Trash gates and security grids for extra protection of your headwall inlet/outlet



Factory-Installed Flow Control Options



20-10C Sluice Gates/Tideflex Valves

Flap Gates

Weir Boards



CIF COMPOSITES INC.

Lightweight, Engineered Inlet and Outlet Control Structures



CIF Composites Inc.
 1810 Verling Avenue Victoria, BC V8M 1X6
 T: 250.652.6313 Toll Free: 1.800.293.1525
 F: 250.652.4800 Email: sales@cifcomposites.com
 www.cifcomposites.com



PRO-ECO-LITE™ HEADWALLS

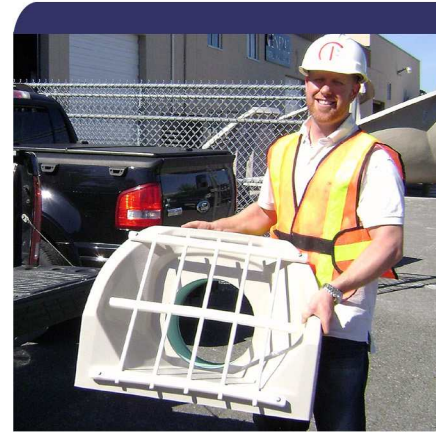
Engineered from a composite reinforced polymer concrete, our CIF PRO-ECO-LITE™ Headwalls combine the lightweight characteristics of plastic with the strength of concrete.

Benefits of our CIF PRO-ECO-LITE™ Headwalls include:

- **Lightweight** – typically 10% of the weight of conventional concrete headwalls. Ideal for weak subgrade conditions.
- **Fast and Simple Installation** – less manpower and lighter machinery to ship, handle and install. Easily maneuvered by hand or on-site equipment.
- **Durability** – composite reinforced polymer concrete is designed to meet the most demanding applications – chemical resistant, UV stabilized and non-corrosive.
- **Versatile Connection** – ENVIRO-CONNECT™ and XPORT™ systems provide a simple, positive (no grout) connection to all pipe types and sizes from 100mm to 2400mm. Concrete pipe connections are made possible with a fiberglass spigot or belled end.
- **Environmental Benefit** – fish friendly, non-leaching, non-corrosive materials, meeting Federal requirements for non-polluting of streams and ditches.



Typical PRO-ECO-LITE™ polymer concrete composite cross section.



Your lightweight alternative.



How our X-Port™ works for simple field connections.



Headwalls can be installed to any pipe type from CSP, HDPE, PVC, and even concrete!



Unique design allows quick and simple installations.

PRO-ECO-LITE™ design is protected under Canadian and U.S. laws. Patent Numbers D477,544 and D477,543.

FOUR EASY STEPS

1



Working with the customer we can aid in choosing the correct model and accessories, to suit your needs.

2



The completed product can be palletted and shipped directly to the jobsite for installation.



3

Upon arrival at the jobsite, lightweight machinery can upload and lower the headwalls into place.



Once lowered into place and connected to the existing pipe, the structure can be backfilled. The completed installation can be finished with a variety of end treatments, including rip-rap slope protection, sod/grass, or cobbles, as shown.



Ideal for driveway and ditch crossings.